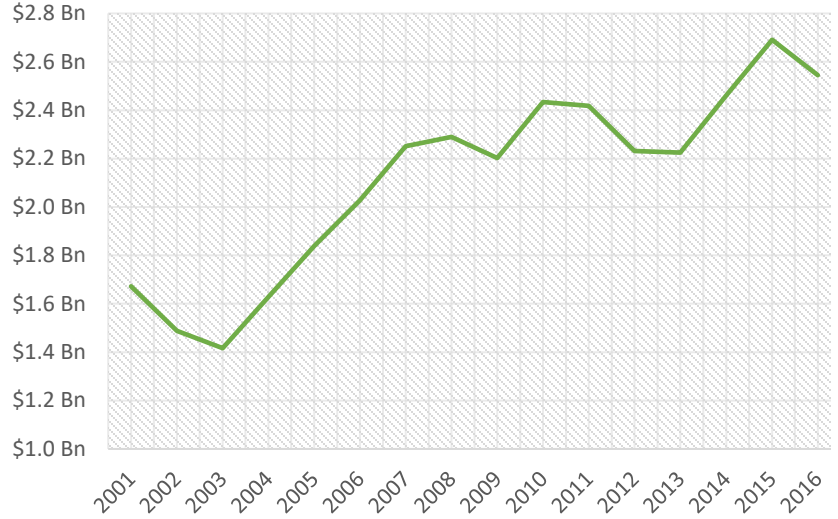
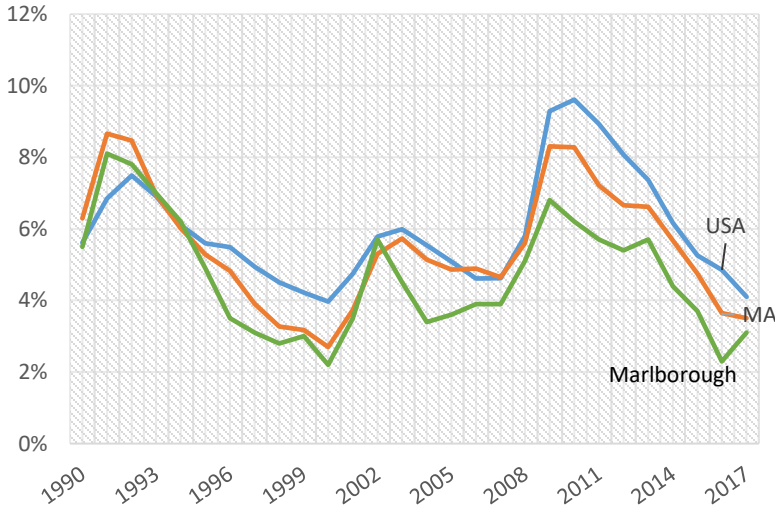


### Payroll

While payroll dipped slightly since our last report, the overall trend is very positive considering in 2003 the payroll was \$1,416,525,649 and from Q2 2016 to Q2 2017 it increased to \$2,620,104,763.<sup>3</sup>



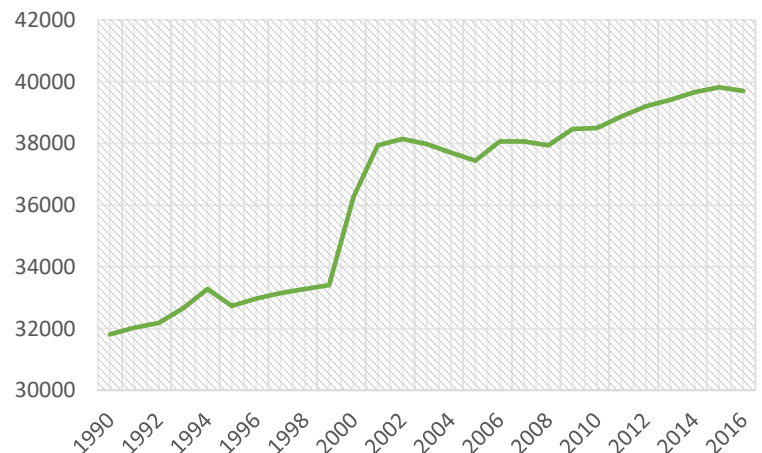
### Low Unemployment



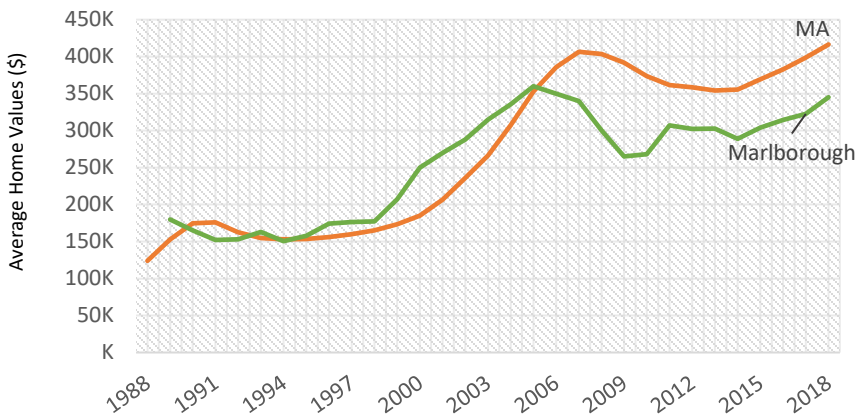
Beyond the year to year averages, in February 2018, the unemployment rate in Marlborough was 3.6%. This is much lower than the state and national rates, which were at 4.0% and 4.1%,<sup>3</sup> respectively.

### Growing Population

The population of Marlborough has been increasing steadily. In 2000, the population of Marlborough was 36,255 this increased to 38,499 by 2010, and in 2016, the population of Marlborough was estimated to be 39,697<sup>5</sup>.



## Rising Home Values



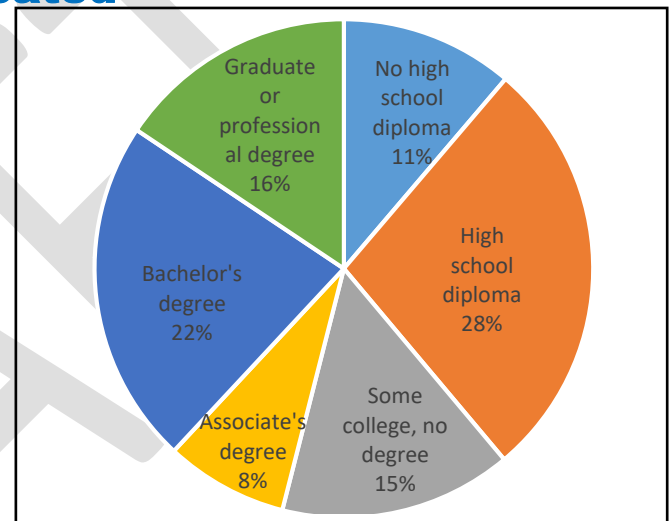
Marlborough's Average Single Family Home value is 346,900 vs. M.A average 416,426

## Median Sale Price Snapshot

March 2018, the median single family sales price in Marlborough was \$345,000<sup>1</sup>. This is slightly lower than the state median sale price, which was \$354,000<sup>1</sup>, and higher than the national median for the same month which was \$251,500<sup>1</sup>.

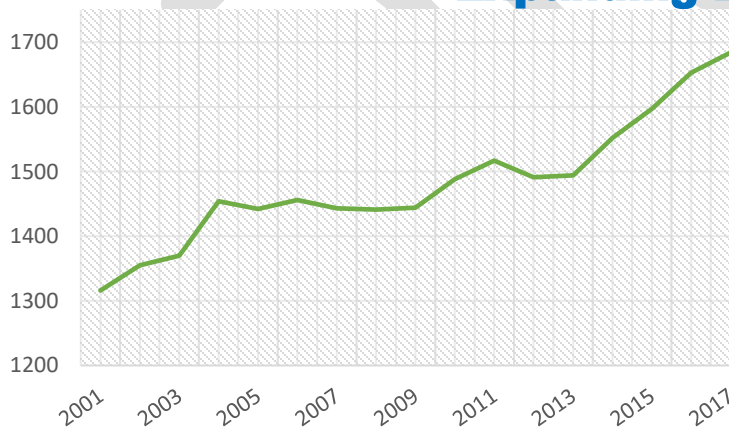
## Well Educated

Marlborough has a well-educated population compared to the nation with 38% of residents having a bachelor's degree or higher. During the same time 41.2% in Massachusetts had a bachelor's degree or higher, while only 30.3% in the U.S. had one.<sup>4</sup>



2012-2016 ACS (U.S. Census Bureau)

## Expanding Employers



The number of employers in Marlborough has been increasing at a steady rate. In 2001, there were 1,316 employers in the town, and by Q2 2017 this number had increased to 1,684.<sup>3</sup>

Mass.gov Municipal Databank <http://www.mass.gov/dor/local-officials/municipal-databank-and-local-aid-unit/databank-reports-new.html> (Line graph municipal data)  
 1. The Warren Group <https://www.bankerandtradesman.com/real-estate-transactions/town-stats/> 2. Ycharts Average US Home Values [https://ycharts.com/indicators/sales\\_price\\_of\\_existing\\_homes](https://ycharts.com/indicators/sales_price_of_existing_homes) 3. Mass.gov Labor and Workforce Development <http://www.mass.gov/lwd/economic-data/> 4. US Census Bureau <https://www.census.gov/> 5. UMASS Donahue Institute <http://www.donahue.umassp.edu/news-events/institute-news/new-population-estimates-for-mass-released-interactive-map-available>