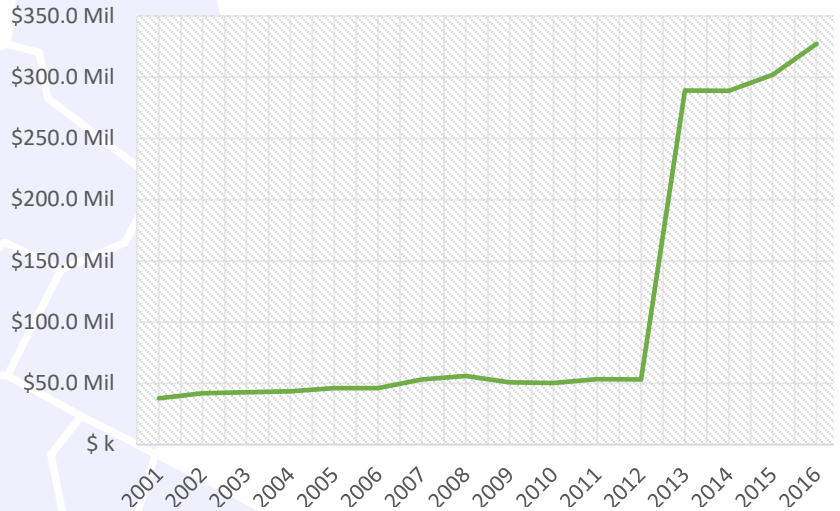
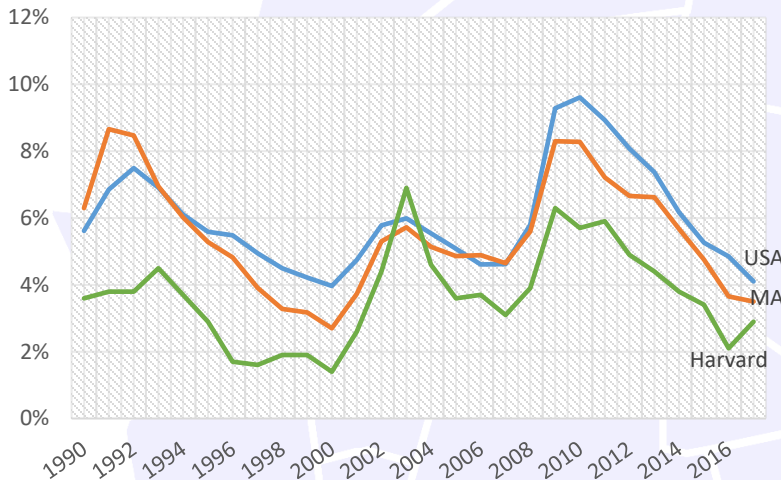


### Increasing Payroll

From Q2 2016 to Q2 2017, the payroll for all places of employment in Harvard was \$ 345,700,881.<sup>3</sup> Since our last report the payroll has increased over \$37 million and the year to year trend remains positive.



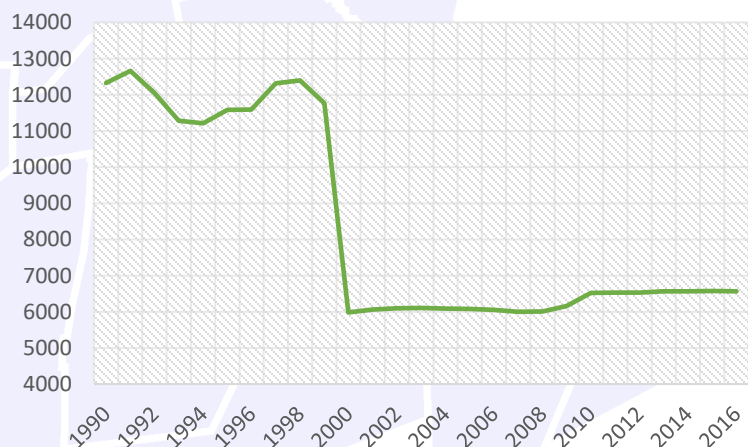
### Low Unemployment



Beyond the year to year averages, in February 2018, the unemployment rate in Harvard was 3.1%. This is much lower than the state and 495/MetroWest regional unemployment rate, which is at 3.35% and 4.0%. The national unemployment rate is 4.1%.<sup>3</sup>

### Growing Population

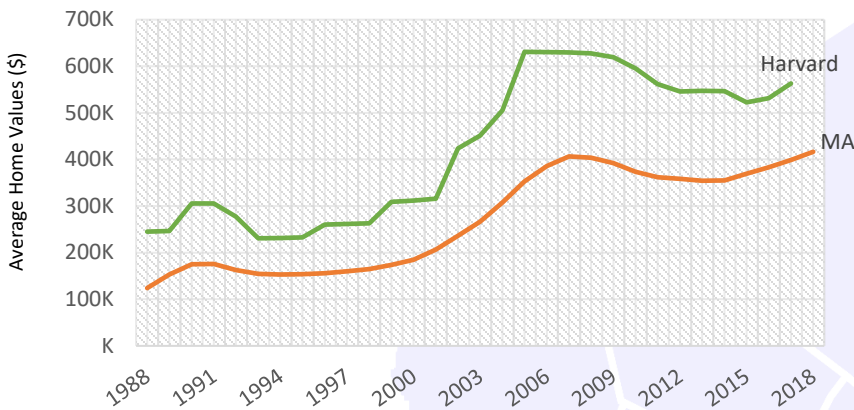
The population of Harvard has been increasing slowly after quite a substantial decline due to the closure of Fort Devers. In 2000, the population of Harvard was 5,981 this increased to 6,520 by 2010, and in 2016 the population of Harvard was estimated to be 6,562.<sup>5</sup>



\*The U.S Census does not differentiate the Devers Portion.

For more information please see the regional report, *Strength In Numbers*, and find additional resources on our website at <http://www.495partnership.org/>

## Rising Home Values



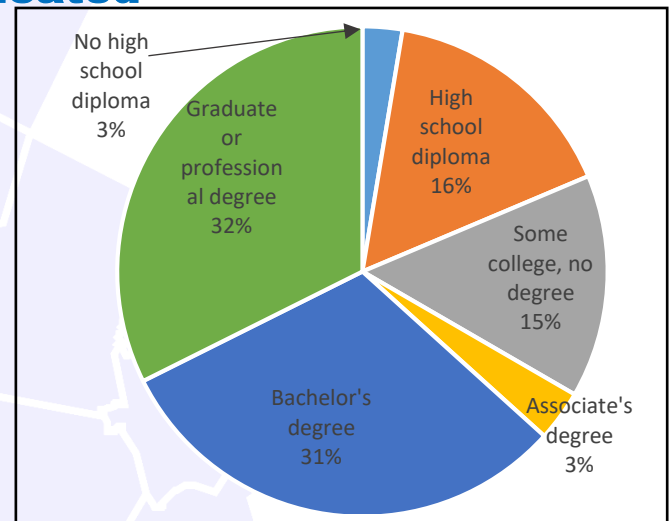
Harvard's Average Single Family Home value is 629,155 vs. M.A average 416,426

## Median Sale Price Snapshot

In February 2018, the median single family sales price in Harvard was \$424,500<sup>1</sup>. This is higher than the state median sale price which was \$354,000<sup>1</sup>, and much higher than the national median which was \$251,500<sup>1</sup>.

## Highly Educated

Harvard has a highly educated population compared to the state and to the nation with 63.3% of residents having a bachelor's degree or higher. During the same time 41.2% in Massachusetts had a bachelor's degree or higher, while only 30.3% in the U.S. had one.<sup>4</sup>



2012-2016 ACS (U.S. Census Bureau)

## Expanding Employers



The number of employers in Harvard has been increasing at a steady rate. In 2001, there were 178 employers in the town, and by Q2 2017 this number had increased to 267.<sup>3</sup>

Mass.gov Municipal Databank <http://www.mass.gov/dor/local-officials/municipal-databank-and-local-aid-unit/databank-reports-new.html> (Line graph municipal data)

1. The Warren Group <https://www.bankerandtradesman.com/real-estate-transactions/town-stats/> 2. Ycharts Average US Home Values

[https://ycharts.com/indicators/sales\\_price\\_of\\_existing\\_homes](https://ycharts.com/indicators/sales_price_of_existing_homes) 3. Mass.gov Labor and Workforce Development <http://www.mass.gov/lwd/economic-data/> 4. US

Census Bureau <https://www.census.gov/> 5. UMASS Donahue Institute <http://www.donahue.umassp.edu/news-events/institute-news/new-population-estimates-for-mass-released-interactive-map-available>