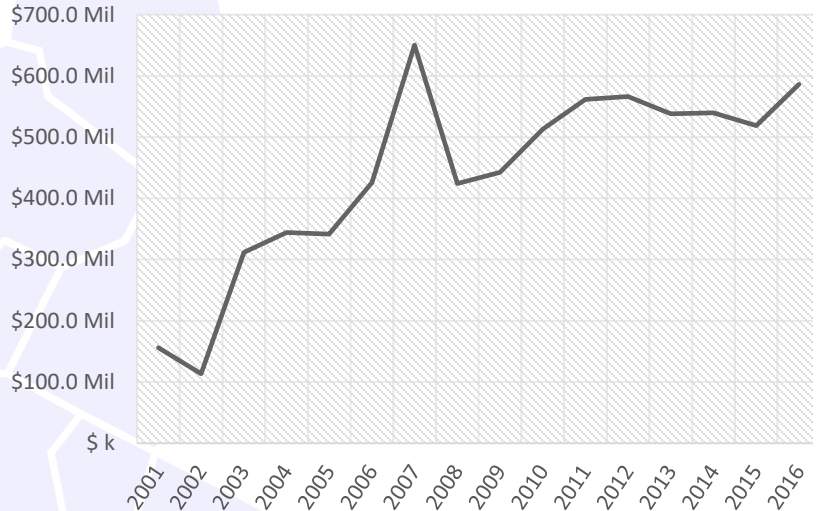
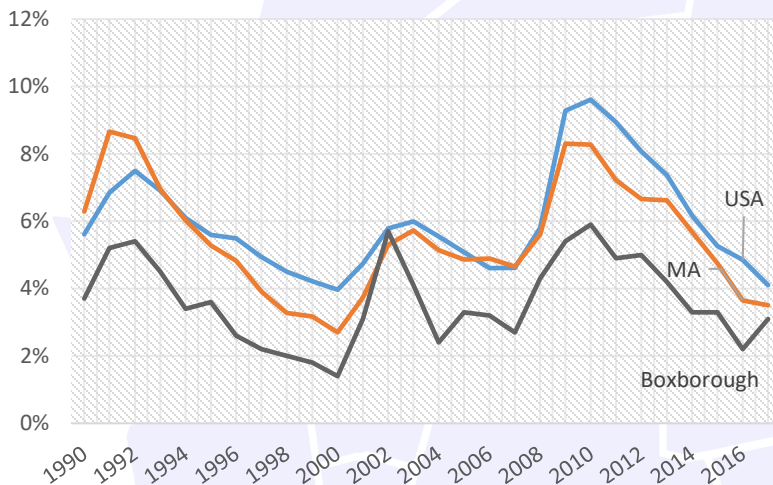


Increasing Payroll

From Q2 2016 to Q2 2017, the payroll for all places of employment in Boxborough was \$610,334,546.³ Since our last report the payroll has increased over \$75.5 million and the year to year trend remains positive.



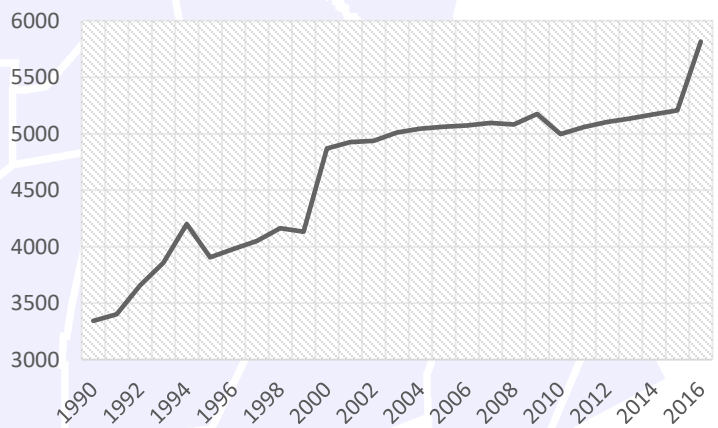
Low Unemployment



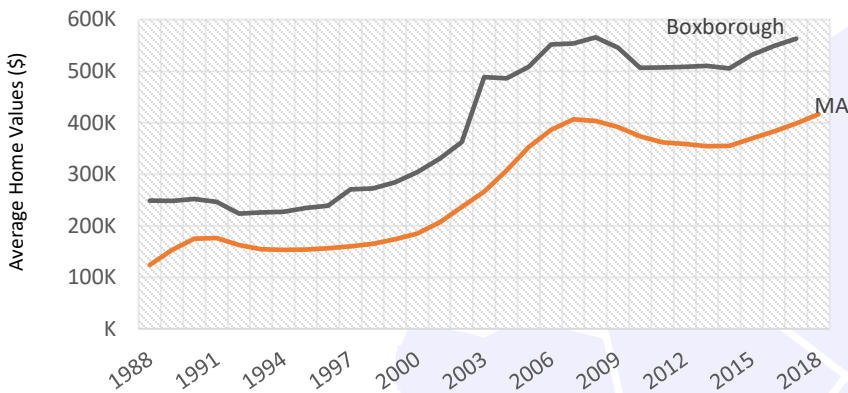
Beyond the year to year averages, in February 2018, the unemployment rate in Boxborough was 2.9%. This is much lower than the state unemployment rate of 4.0% and significantly lower than the national unemployment rate of 4.1%.³

Growing Population

The population of Boxborough has been increasing steadily. In 2000, the population of Boxborough was 4,868 this increased to 4,996 by 2010, and in 2016, the population of Berlin was estimated to be approximately 5,816.⁵



Rising Home Values



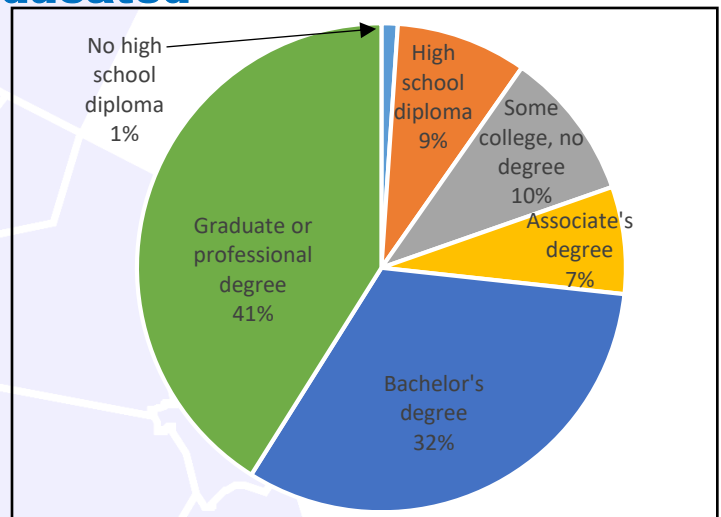
Boxborough's Average Single Family Home value is 576,554 vs. M.A average 416,426

Median Sale Price Snapshot

In February 2018, the median single family sales price in Boxborough was \$750,073.¹ This is much higher than the state median sale price for 2018 which was \$354,000¹ and significantly higher than the national median for that month which was \$251,500¹.

Highly Educated

Boxborough has a highly educated population compared to the state and to the nation with 73.3% of the residents having a bachelor's degree or higher. During the same time 41.2% in Massachusetts had a bachelor's degree or higher, while only 30.3% in the U.S had one.⁴



2012-2016 ACS (U.S. Census Bureau)

Expanding Employers



The number of employers in Boxborough has been slightly increasing. In 2001, there were 153 employers in the town, and by Q2 2017 this number had increased to 184.³

Mass.gov Municipal Databank <http://www.mass.gov/dor/local-officials/municipal-databank-and-local-aid-unit/databank-reports-new.html> (Line graph municipal data)
 1. The Warren Group <https://www.bankerandtradesman.com/real-estate-transactions/town-stats/> 2. Ycharts Average US Home Values https://ycharts.com/indicators/sales_price_of_existing_homes 3. Mass.gov Labor and Workforce Development <http://www.mass.gov/lwd/economic-data/> 4. US Census Bureau <https://www.census.gov/> 5. UMASS Donahue Institute <http://www.donahue.umassp.edu/news-events/institute-news/new-population-estimates-for-mass-released-interactive-map-available>